



[HOME](#)

[OUR TEAM](#)

[OUR SERVICES](#)

[CONTACT US](#)

[JOIN OUR TEAM](#)

“LET US THINK OF
EDUCATION AS THE MEANS
OF DEVELOPING OUR
GREATEST ABILITIES,
BECAUSE IN EACH OF US
THERE IS A PRIVATE HOPE
AND DREAM WHICH,
FULFILLED, CAN BE
TRANSLATED INTO BENEFIT
FOR EVERYONE AND
GREATER STRENGTH FOR
OUR NATION.”

— JOHN F. KENNEDY

We Are a community of educators who have dedicated our lives to public education. We have an unshakeable belief that all children in America can succeed academically, including English Language Learners and under-credited teens. Global Partnership Schools was founded on this principle, to transform the public school learning environment, raise student achievement, and prepare both students and educators for global citizenship.

We Believe...

- ... in a three-pronged approach that combines proven and inspired methods, caring and meticulous implementation, and exceptional teacher development;
- ... that every child deserves to have a champion;
- ... that diversity and multiculturalism do not diminish but indeed enrich the educational experience and is a unique advantage of the American system;
- ... that school achievement grows when bolstered by 360° partnerships with families, the community, businesses, higher education and government;
- ... that every school can become a model of ever higher achievement; and
- ... that high standards, performance metrics and national and international benchmarking ensure greater accountability and sustainability.

We Intend to work until America's K-12 outcome is a resounding success.



“IF WE WANT THE CHILDREN OF AMERICA TO EMBRACE EDUCATION, WE MUST PROVIDE AN EDUCATIONAL ENVIRONMENT THAT FIRST EMBRACES THEM. GLOBAL PARTNERSHIP SCHOOLS WAS FOUNDED ON THIS PRINCIPLE.”

— MANUEL J. RIVERA

HOME

OUR TEAM

OUR SERVICES

CONTACT US

JOIN OUR TEAM

BOARD OF ADVISORS

Margaret Corcoran, SIP
Project Director, GEMS

Dr. Stephen Jones,
Superintendent, Norfolk, VA

Wilfredo Laboy,
Superintendent, Lawrence, MA

Peter McWalters,
Commissioner of Education,
Rhode Island

Dr. Niall Nelson, CAO, GEMS

Dr. Claire Sylvan, CEO &
President, International Schools

Dr. Adam Urbanski, Vice
President, American Federation
of Teachers

Dr. Arthur Walton, Dean, St.
John Fisher College Network,
LLC

Global Partnership Schools is led by nationally acclaimed educators who have personally experienced the transformative power of education both as children being inspired by adults and as adults inspiring children. They have had exceptional careers guided by a deep and abiding passion for children. Global Partnership Schools embodies the sum of their successes and their vision of education's potential for America's children.

Chairman and CEO, Dr. Manuel Rivera has successfully tackled education's most pressing issues from multiple perspectives—from the schools as teacher and award-winning administrator, from the government as New York State's first education policy advisor under Governors Eliot Spitzer and David Paterson, from the private sector as Edison Schools' trailblazing head of development, and, most personally, as a caring parent. As Deputy Secretary for Education for the State of New York, he helped establish accountability standards and oversaw the largest infusion of state aid for education in state history. As two-time superintendent of the Rochester School District, he introduced comprehensive community partnership programs, rolled out effective tutoring programs for at-risk students, turned around failing middle schools and high schools, and elicited double-digit gains in student achievement.



President, Dr. Rudy Crew is a lifelong educator whose career has spanned from the classroom to chancellor of New York City Public Schools. He is a renowned leader and reformer who has made it his mission to improve student achievement, especially for poor and minority students. He has demonstrated the courage it takes to make the difficult choices to implement the changes needed for realizing the vision of educational excellence for all students. Most recently, Dr. Crew served as Superintendent of the nation's fourth largest school district, Miami-Dade County Public Schools, from 2004-2008. He worked closely with stakeholders to craft a strategic plan that set a clear and compelling vision and direction for Miami-Dade. Through such innovations as The Parent Academy and the School Improvement Zone, Miami-Dade was transformed and viewed as a model for other districts across the nation.



Both Dr. Rivera and Dr. Crew have been honored as National Superintendents of the Year, along with numerous other recognitions and awards.



HOME

OUR TEAM

OUR SERVICES

CONTACT US

JOIN OUR TEAM

"CHILDREN RISE TO OUR EXPECTATIONS WHEN WE CHALLENGE THEM. WE SHOULD EXPECT NOTHING LESS THAN EXCELLENCE OF THEM, AND WE SHOULD GIVE THEM NOTHING LESS."

— RUDY CREW

At Global Partnership Schools, we believe that every student has the ability to meet rigorous learning standards if they are engaged and challenged by caring educators equipped with appropriate methods. Global Partnership Schools is distinguished by...

- ... high standards
- ... customized, student-centered approach
- ... research-based instructional best practices
- ... national and international benchmarking
- ... emphasis on outcomes and accountability
- ... expertise with English Language Learners
- ... technology-enhanced learning
- ... network of partnerships for greater success

GLOBAL PARTNERSHIP SERVICES

Our Supplemental Education Centers provide tutoring for eligible students in math, reading, and writing. Our lessons and methods are evidence-based, grounded in research, and designed to complement the regular school curriculum. We customize instruction, adapting the material to each student's needs and abilities, and individual attention is always provided when needed. Content incorporates other subject areas being covered in the regular classroom, and students are also trained in metacognitive skills, so that they develop the ability to learn how to learn. Our approach has been proven effective with all types of students, including English Language Learners and students with disabilities.

Our Global Partnership Graduation Centers provide a high school diploma program for students in need of a flexible alternative option, including students who have dropped out of high school or are at risk of dropping out, those who have adult responsibilities that interfere with attending a traditional high school, and those who require additional support in literacy or because of disabilities. Our Centers are housed in professional, off-campus settings, and special features include flexible scheduling, virtual learning, and carefully designed professional internships that build on the in-class curriculum. We also offer an advisory program and individualized social-emotional developmental support.

Quality

Accountability

Partnership



[HOME](#)

[OUR TEAM](#)

[OUR SERVICES](#)

[CONTACT US](#)

[JOIN OUR TEAM](#)

“UPON THE EDUCATION OF
THE PEOPLE OF THIS
COUNTRY, THE FATE OF THIS
COUNTRY DEPENDS.”

— BENJAMIN DISRAELI

E-mail address:

info@gps.us.com

Mailing addresses:

General inquiries:

767 Third Avenue, 31st Floor

New York, NY 10017

Phone: (212) 644-8619

Fax: (212) 644-8749

Program-related inquiries:

300 State Street, Suite 305

Rochester, NY 14614

Phone: (585) 355-4305

Fax: (585) 355-4249



HOME

OUR TEAM

OUR SERVICES

CONTACT US

JOIN OUR TEAM

“MORE IMPORTANT THAN
THE CURRICULUM IS THE
QUESTION OF THE METHODS
OF TEACHING AND THE
SPIRIT IN WHICH THE
TEACHING IS GIVEN.”

— BERTRAND RUSSELL,
ENGLISH PHILOSOPHER

If you would like to be considered for future opportunities with our Supplemental Education Centers, please send your resume along with a cover letter highlighting your interest and qualifications to jobs@gps.us.com.

Inquiries will be considered as positions come available. We will be seeking certified teachers and retired teachers who are in good standing; have demonstrated a commitment to positive student relationships and open communications with parents; have made professional contributions to their schools; and would embrace comprehensive and ongoing professional development. Additional certifications, e.g., ELL, ESOL, special education, etc., bilingual ability and experience working with Title I students are preferred. Administrative positions will also require successful administrative experience.

Future positions include:

Regional Coordinators to supervise regional programs and staff. Responsibilities include hiring, professional development, monitoring and administration.

Lead Coaches to oversee programs and staff in a school or district. Responsibilities include mentoring, monitoring, and data collection and analysis.

Tutors to instruct students and implement programs. Responsibilities include regular communication with school personnel and parents, student assessment, and record keeping.

Detailed qualifications will be available as specific positions are posted.

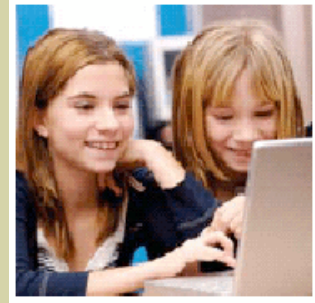


- [SCHOOL DESIGN](#)
- [SCHOOL LOCATIONS](#)
- [FACILITIES](#)
- [CONTACT US](#)

Nations Academy has been formed to create the world's first truly global school. By 2017, Nations plans to open more than 60 campuses serving 100,000 plus students in leading cities in the United States and around the world. Its first two campuses are scheduled to open in fall 2010 in Bethesda, Maryland and New York City, followed by four more campuses in fall 2011. Nations will offer an internationally integrated, globally-focused education program for students age three through 12th grade. Each campus will be focused around Nations' curricular and institutional ethos, stressing the highest academic standards, independent learning, collaboration, and global citizenship.



WHAT MAKES THE NATIONS ACADEMY SCHOOLS UNIQUE?



SCHOOL DESIGN

SCHOOL LOCATIONS

FACILITIES

CONTACT US

Nations Academy will differentiate itself from its peers in several critical ways:

1. **Global network:** students will be encouraged to experience life at several Nations campuses over the course of their school experience—a transition from school to school that will be seamless for both students and parents.
2. **Curriculum:** Nations will adopt and execute the International Baccalaureate (IB) as the core curriculum for the Upper School. The stature of this degree will help Nations forge critical relationships with the world's most prestigious universities. Additionally, Nations' Upper School students will have the opportunity to earn Advanced Placement (AP) credits.
3. **Foreign language instruction:** unlike traditional foreign language programs, Nations will teach foreign languages by full linguistic and cultural emersion, ensuring that students achieve fluency in a foreign language by the time they graduate.
4. **Above-scale pay:** Nations will be able to recruit and retain the best administration and faculty because it will pay them significantly more than competitors and provide them with more resources than other schools.
5. **Scale:** because of the breadth of the global system, Nations will be able to allocate the research and development resources only possible in large corporations.
6. **Facilities:** school spaces—from learning to administrative spaces—are designed to integrate innovative new approaches to learning, teaching, technology and school culture and will be generally much superior to those of competing private schools.



WHERE WILL THE NATIONS ACADEMY SCHOOLS BE LOCATED?

Some text here about how the locations were chosen and which will be the first schools to open.



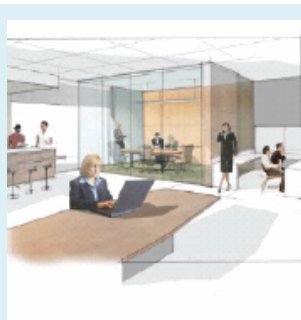
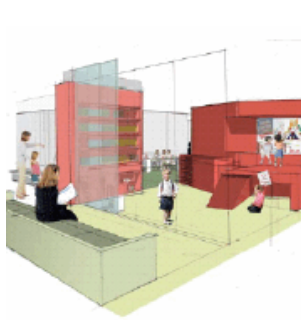
- SCHOOL DESIGN
- SCHOOL LOCATIONS
- FACILITIES
- CONTACT US





TELL ME MORE ABOUT THE STATE-OF-THE-ART FACILITIES AT NATIONS ACADEMY SCHOOLS.

While Nations' facilities will include traditional elements—classrooms, labs, libraries, performing and fine arts spaces, gyms, dining halls, offices, etc.—the unique composition and design of these elements will help differentiate a Nations School. Here are a few of the space modules that are emblematic of Nations' schools unique facilities.



- [SCHOOL DESIGN](#)
- [SCHOOL LOCATIONS](#)
- [FACILITIES](#)
- [CONTACT US](#)

Early Childhood Learning Modules

Early Childhood and Lower School spaces are designed with three principal goals in mind: to intrigue, engage and motivate Nations' youngest pupils. Younger age groups are integrated into two paired classroom units, each focused around a playful pavilion that makes many transformations in one day: children's theater, story time area, play house, castle, reading nook, to name only a few. Also, the Pre-K and Lower School will have dedicated libraries featuring group and individual reading areas.

Teachers' Center

This light-filled space will be the central hub for faculty life. Designed to foster collaboration, the Teachers' Center will provide a variety of refined settings to support staff and faculty needs throughout the day. Amenities will include individual workstations and file storage, small collaboration and planning areas, a fireside lounge for informal interaction, a cappuccino bar and a periodicals area. The Teachers' Center will also include a warming kitchen, as well as printing, copy and mail areas.

The Nations Commons

Most traditional school lobbies turn into empty shells after the sound of the first bell. At Nations, the lobby will be the hub of the school, where students socialize, study and gather over the course of a day. From the Nations Commons, much of the hustle and bustle of the school will be transparent; the Media Center and the Nations Café will be visible. Student events and activities will be broadcast onto the lobby's interactive media globe, a Nations icon that will connect students and teachers to other Nations campuses worldwide.

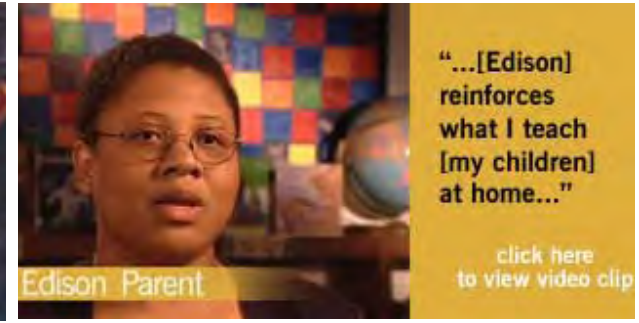


- SCHOOL DESIGN
- SCHOOL LOCATIONS
- FACILITIES
- CONTACT US**

CONTACT US



For more information
about Nations Academy,
contact us at
info@nationsacademy.com



- DISTRICT PARTNERSHIPS
- CHARTER SCHOOLS
- EDUCATIONAL SERVICES
- EDISON ALLIANCE
- CAREERS AT EDISON
- PRESS ROOM
- CLIENT ACCESS

Who We Are

School Design and Curriculum

Schools

Achievement and Results

FAQs

Contact Us

Parents

Educators

Clients

Search

W

elcome to Edison Schools

Founded in 1992, Edison Schools is the nation's leading partner with public schools and school districts, focused on raising student achievement through its research-based school design, uniquely aligned assessment systems, interactive professional development, integrated use of technology and other proven program features. Edison students are achieving annual academic gains well above national norms.

Edison Schools Inc. now serves more than 250,000 public school students in over 20 states across the country and in the U.K. through its whole school management partnerships with districts and charter schools; summer, after-school, and SES programs; and achievement management solutions for school systems.



EDISON NEWS

EDISON IN THE NEWS

[Edison Schools to Serve More Than 250,000 Students in 2004-2005](#)

[Archive](#)

PRESS RELEASES

[Edison Schools to Serve More Than 250,000 Students in 2004-2005](#)

[Archive](#)

NEWS FROM OUR SCHOOLS

[Edison Schools to Serve More Than 250,000 Students in 2004-2005](#)

[Archive](#)

ISRAEL & ISRAEL, LLP

ATTORNEYS AT LAW

SPECIALIZING IN THE
REPRESENTATION OF
HEALTHCARE FACILITIES

- CLAIM SEARCH
- NEWS/REGULATIONS
- FORMS
- EMPLOYMENT OPPORTUNITIES
- CONTACT US